

1-3/4" x 4-1/2" Flush Glaze

This attractive and high quality storefront is ideal for any new construction or remodel project. Stylish, yet sturdy, our storefront is designed to give your project reliability and protection while giving you the perfect view.

Fabrication using screw spline assembly reduces the number of components and allows the flexibility needed to complete easy and complex glazing projects.

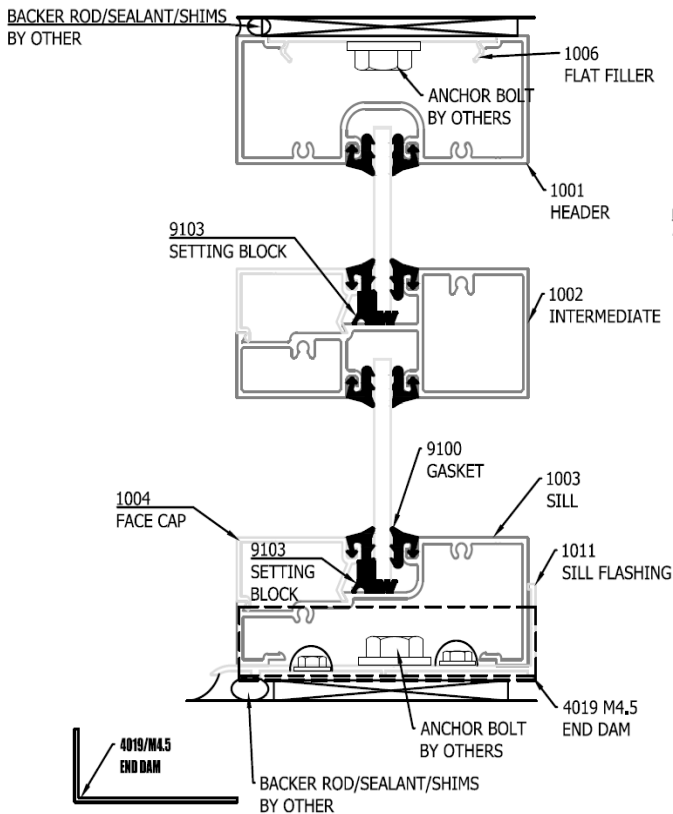
PERFORMANCE DATA:

- Air performance per ASTM E283
- Water performance per AAMA 501 and ASTM E331
- Structural performance per ASTM E330
- * Tests conducted by independent laboratories.

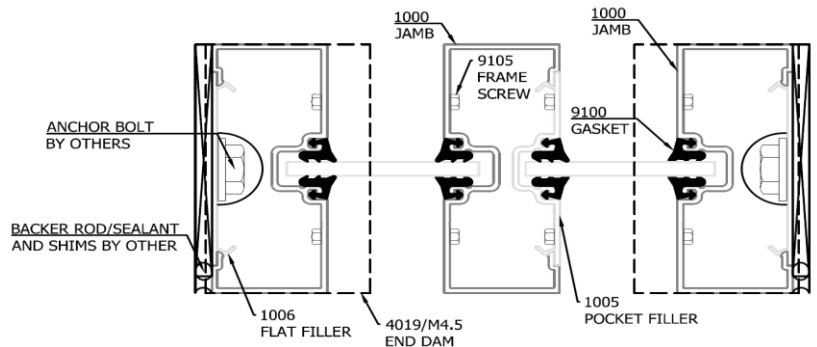
Full report is available upon request.



Horizontal Detail



Vertical Detail



Finishes Available: Bronze Anodized, Black Anodize, Clear Anodized Powder Coat

Sight Profile: 1-3/4"
System Depth: 4-1/2"
Glazing Thickness: 1/4", 3/8", 1/2"