

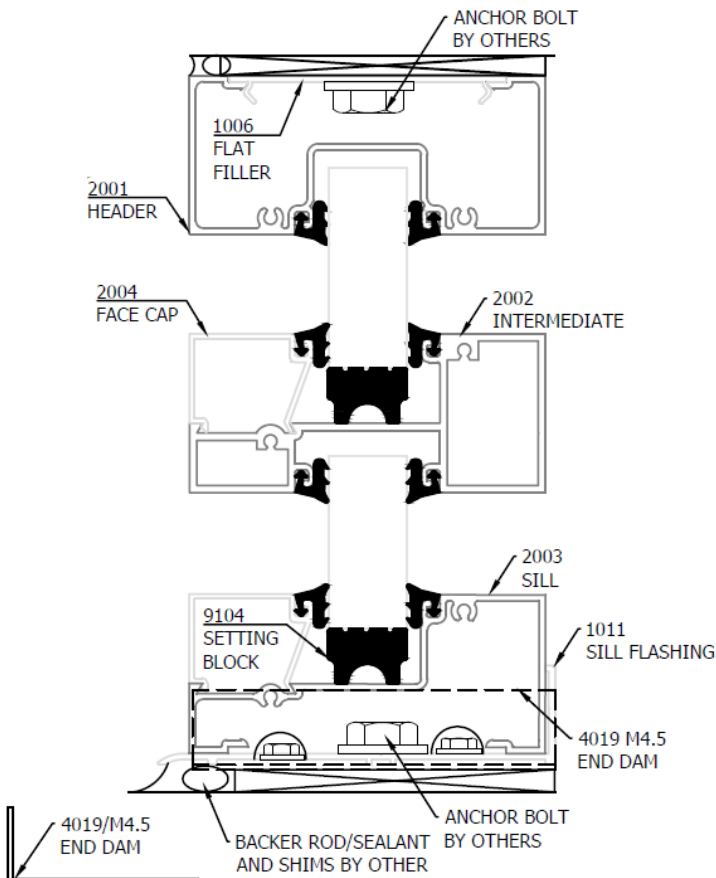
(Non-thermal) 2" x 4-1/2" Flush Glaze

Atlas storefront is designed for flexibility as well as economy. Our 2" x 4-1/2" system is perfect for commercial applications that seek the efficiency of insulated 1" glass panels and the economy of standard non-thermal storefront.

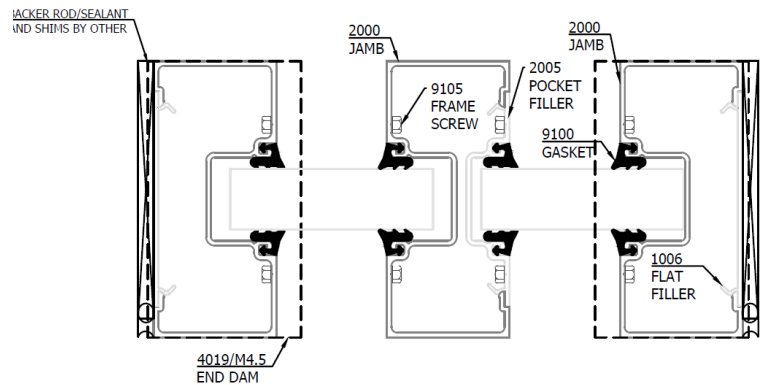
Our center-set screw spline system utilizes our standard storefront EDPM gasket.



Horizontal Detail



Vertical Detail



Finishes Available:	Class I Anodize Class II Anodize 2604 / 2605 Paint
---------------------	--

Sight Profile:	2"
System Depth:	4-1/2"
Glazing Thickness:	1"